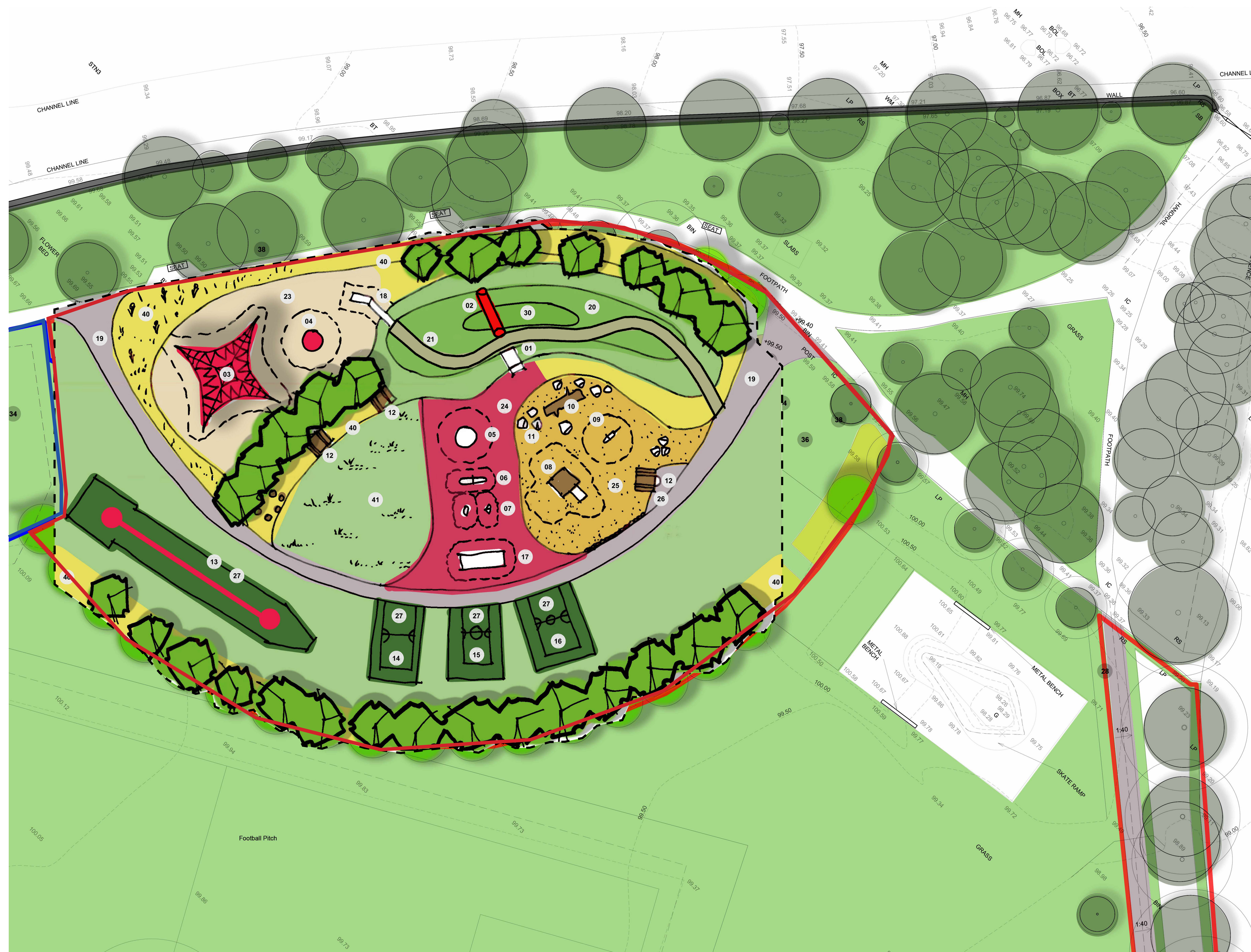


AUCHTERARDER PRIMROSE PARK

CONCEPT DESIGN : EQUIPMENT & LAYOUT MAY VARY

09.03.2022



KEY

- Phase 1 play area works
- Pump track / transition to proposed play area

NB - Only labels 1-30 shown on sketch plan. Refer to previous layout for additional labels.

Equipment

- 01 Junior slide to mound (1.5m h)
- 02 Play tunnel
- 03 Climbing net (5.7m h)
- 04 Large spinning disc
- 05 Wheelchair accessible in-ground roundabout
- 06 See-saw
- 07 Springer 2no.
- 08 Timber sand play structure & rope net**
- 09 Sand Digger
- 10 Play tree
- 11 Play boulder
- 12 Wheelchair accessible picnic benches
- 13 Cableway (25m length)
- 14 Swing – 2no. flat seats
- 15 Swing – Basket
- 16 Swing – Inclusive boat swing & cradle swing
- 17 Wheelchair accessible inground trampoline
- 18 Senior slide (2.4m h)

Surfacing

- 19 Hot rolled asphalt path (1.8m w)
 - 20 Gravel path to mound (1.2m w)
 - 21 Natural stone stepping stones to mound
 - 23 Wood chip: play grade
 - 24 Sand carpet (colours tbc)
 - 25 Sand: play grade
 - 26 Hot rolled asphalt area with coloured chips
 - 27 Grass safety mat
 - 28 No dig construction asphalt path (1.8m w)
- 30 Play Mound
 - 33 Drainage
 - 34 Pump track – Future Phase
 - 35 Area left undeveloped to allow option for future skate park extension
 - 36 Area left undeveloped for events / future extensions flexibility
 - 38 Existing tree retained
 - 39 Proposed tree
 - 40 Wildflower meadow / long grass area
 - 41 Mown grass
 - 42 Mounds to be a combination of long grass & mown grass
 - 43 Ducting installed for potential future lighting (external lighting subject to future planning permission)
 - 44 Area to remain undeveloped to allow for potential future external lighting

01 & 02 Junior slide to mound & tunnel



03 Climbing net



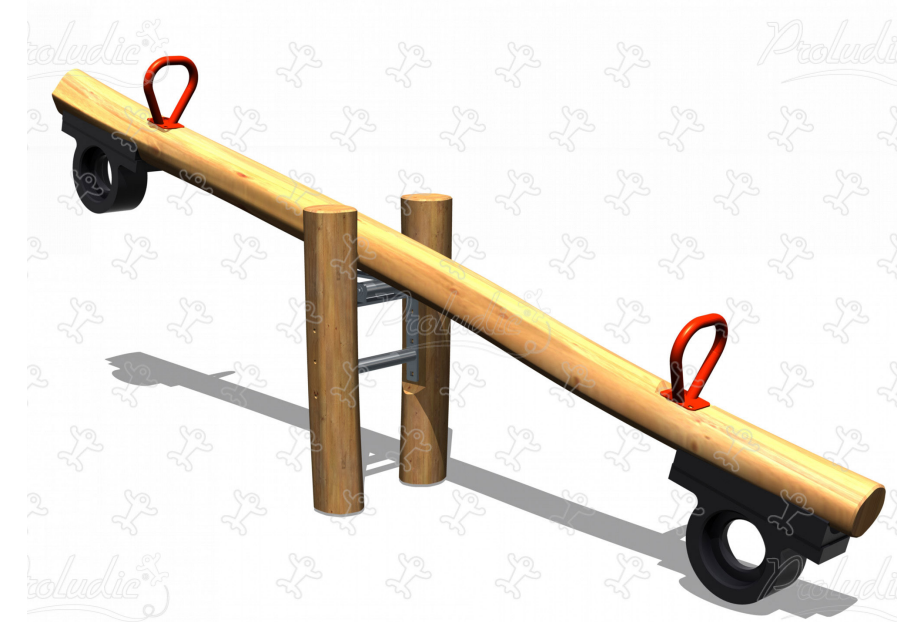
04 Large spinning disc



05 Wheelchair accessible in-ground roundabout



06 See-saw



07 Springer 2no.



08 Timber sand play structure & rope net



09 Sand Digger



10 Play tree



11 Play boulder



12 Wheelchair accessible picnic benches



13 Cableway



14 Swing – 2no. flat seats



15 Swing – Basket



16 Swing – Inclusive boat swing & cradle swing



17 Wheelchair accessible inground trampoline



18 Senior slide – Phase 1B



ADDRESSING POINTS RAISED BY THE COMMUNITY ON 12.02.2022

A. Could the big net be moved towards the main road and rotated so it is a focal point?

We have adjusted the design to increase visibility of the new play park from the road, with the climbing net and slide mound positioned accordingly.

B. Can the main pieces be clearly viewable from the road?

Please see A.

C. Can the Senior slide be rotated through 90 degrees?

To accommodate the desire for visibility, and by altering the layout of the different play zones, the design evolved to include a rotation of the slide.

D. Can there be 'monkey bars'?

To ensure that all key and priority pieces of play equipment are included in the design, and with an already diverse offering of climbing features, the inclusion of monkey bars does not seem to be necessary at this stage but could be incorporated into a trim trail development at a later stage.

E. Can there be a covered/enclosed slide?

Covered slides are not part of the PKC play equipment portfolio for reasons of maintenance and health & safety.

F. Can there be 'height and humps' (mounds) on the football pitch side?

'Height and humps' form a key part of the design of the play park for the slides, also as play features in themselves around the park as the detail design takes place.

G. Can the picnic benches be spread out as well as the swings?

We have accommodated the spreading out of picnic benches within the design to facilitate different locations for seating and play zone interaction. The swings have also been spread out within this new sketch design.

H. Can the large climbing net be linked to the large slide?

We will review connecting the net to the slide as detail design progresses and the specification of the net is discussed with the supplier.

I. Can there be softer edges (less straight edges) to the different ground coverings?

Softer edges have been incorporated within the design and the different mounding features.

J. Can there be an add on to the sand play equipment of buckets (chain pulleys) – like at North and South Inch?

A timber sand play structure (see sketch plan and equipment photos) in addition to the sand digger have been added to the design providing a greater diversity of sand play value overall.

K. Will there be a toilet in the park?

Providing a toilet for park users is not within the remit of this project.

L. Is there a security provision?

Natural surveillance will increase with use of the new play park; there will be the option in future development projects to apply for planning permission to add light columns in the park if desired.

M. The entrance from the road needs widened and there needs to be a safe road crossing point on the main road.

This is an issue that has been raised with PKC Roads department, and is not within the remit of this project.