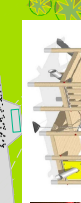
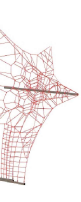
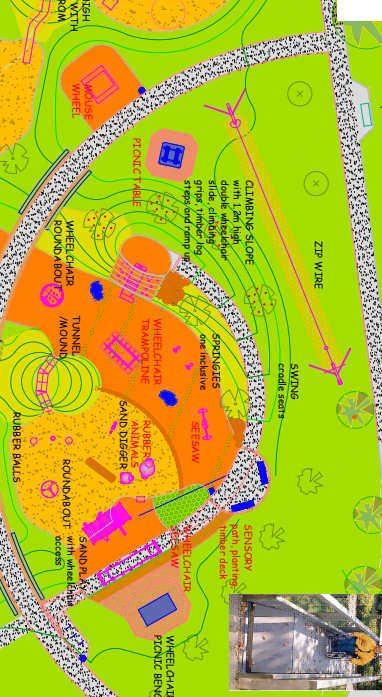
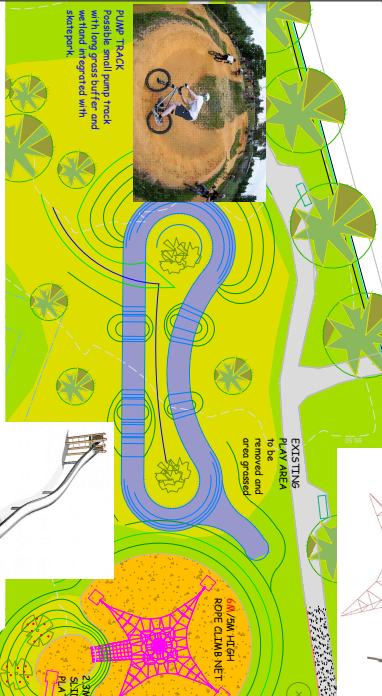


AUCHTERADER PUBLIC PARK - FINAL PROPOSAL

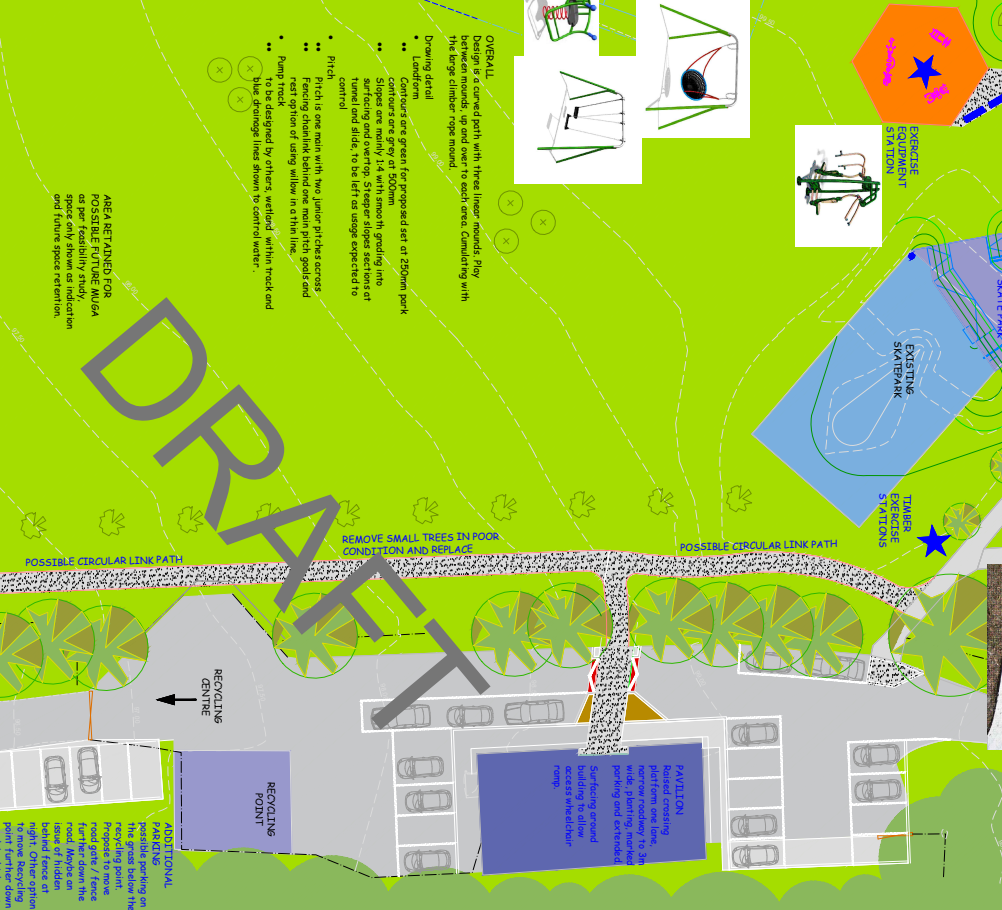
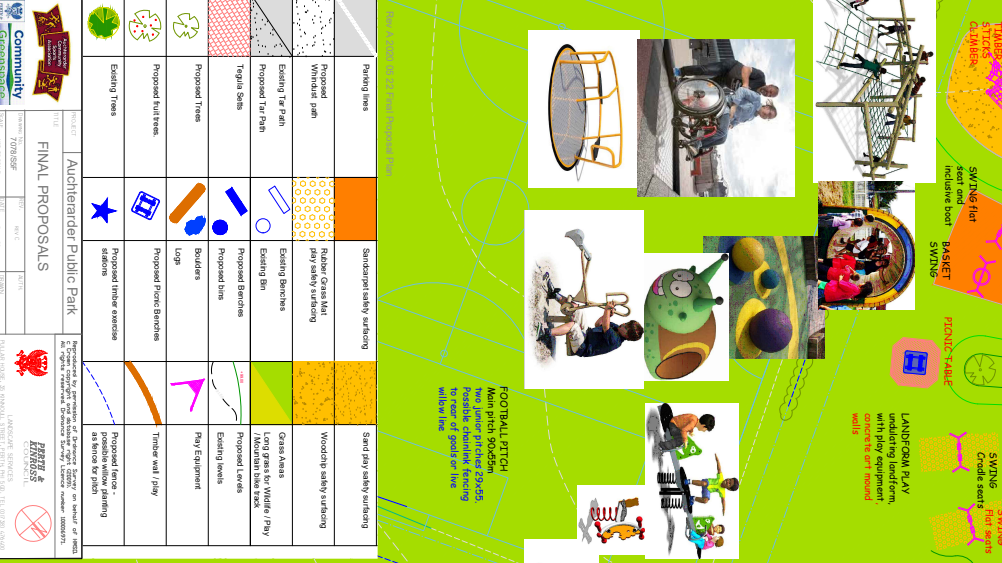
PLAY AREA
 Possible on-slope light entrance / pedestrian barrier or fill in with stone wall and remove path



PATH
 Section to be left to removed path



AUCHTERADER PUBLIC PARK - OVERALL PLAN



Key

	Proposed trees		Existing trees
	Proposed path		Existing path
	Proposed play area		Existing play area
	Proposed sand pit		Existing sand pit
	Proposed exercise area		Existing exercise area
	Proposed seating		Existing seating
	Proposed landscaping		Existing landscaping

FINAL PROPOSALS

RECYCLING CENTRE
 Possible additional parking with spaces for recycling bins.

PAVILION
 Possible additional parking with spaces for recycling bins.

EXERCISE EQUIPMENT
 Possible additional parking with spaces for recycling bins.

LANDSCAPE
 Possible additional parking with spaces for recycling bins.

FOOTBALL PITCH
 Main pitch, 110m x 70m. Possible additional seating to rear of goal or line within line.

OVERALL
 Design is a compact park with three large rounds. Play areas are separated by green space, connecting with the large climber rope mound.

Drawing Detail
 •• Contours are green for proposed set at 250mm peak
 •• Contours are grey at 500mm
 •• Slopes are mainly 1:4 with smooth grading into an
 •• tunnel and slide, to be left as usage expected to
 •• control.

Pitch
 •• Pitch to be set up with two junior pitches, grass
 •• Fringe climber behind, to be removed to pitch and
 •• rest option of using within in a thin line.
 •• Pump track
 •• To be designed by others, wetland within track and
 •• to be designed into stream to control water.

AREA RECYCLED FOR POSSIBLE FUTURE AUDA
 Space only shown as indication and future space retention.

ADDITIONAL
 Possible additional parking with spaces for recycling bins.

RECYCLING POINT
 Possible additional parking with spaces for recycling bins.

DRY

AS24 WESTERN RD
 PARK ROAD ACCESS TO PARK AND RECYCLING CENTRE